



Draft Wicklow Town – Rathnew LAP Submission - Report

Who are you:	Group
Name:	Wicklow Enterprise Park
Reference:	DWTRLAP-152831
Submission Made	October 21, 2024 2:39 PM

Topic

[Green Infrastructure / GI map](#)

Submission

Submission on behalf of The Board of the Wicklow Enterprise Park:

In 2007, the Wicklow Enterprise Park & Wicklow County Council jointly purchased Folio 5875. This land was zoned for 'Employment'.

A review of the 2013- 2019 Local Area Plan shows the Folio 5875 zoned for Enterprise & Employment E1.

The DRAFT Wicklow town – Rathnew LAP 2025 shows Folio 5875 zoned for 'Employment'. However, it is noted a significant 'green zone' OS 1 or OS 2 has been included to zoning status.

The Board requests the 'retention' of the current 'Employment – Enterprise status' without green zone inclusions.

Topic

[Land Use Zoning Map](#)

Submission

Submission on behalf of The Board of the Wicklow Enterprise Park:

In 2007, the Wicklow Enterprise Park & Wicklow County Council jointly purchased Folio 5875. This land was zoned for 'Employment'.

A review of the 2013- 2019 Local Area Plan shows the Folio 5875 zoned for Enterprise & Employment E1.

The DRAFT Wicklow town – Rathnew LAP 2025 shows Folio 5875 zoned for 'Employment'. However, it is noted a significant 'green zone' OS 1 or OS 2 has been included to zoning status.

The Board requests the 'retention' of the current 'Employment – Enterprise status' without green zone inclusions.

File

Land Use Zoning Map dWTR LAP 2025.pdf, 2.42MB

DRAFT
Wicklow Town - Rathnew
Local Area Plan 2025

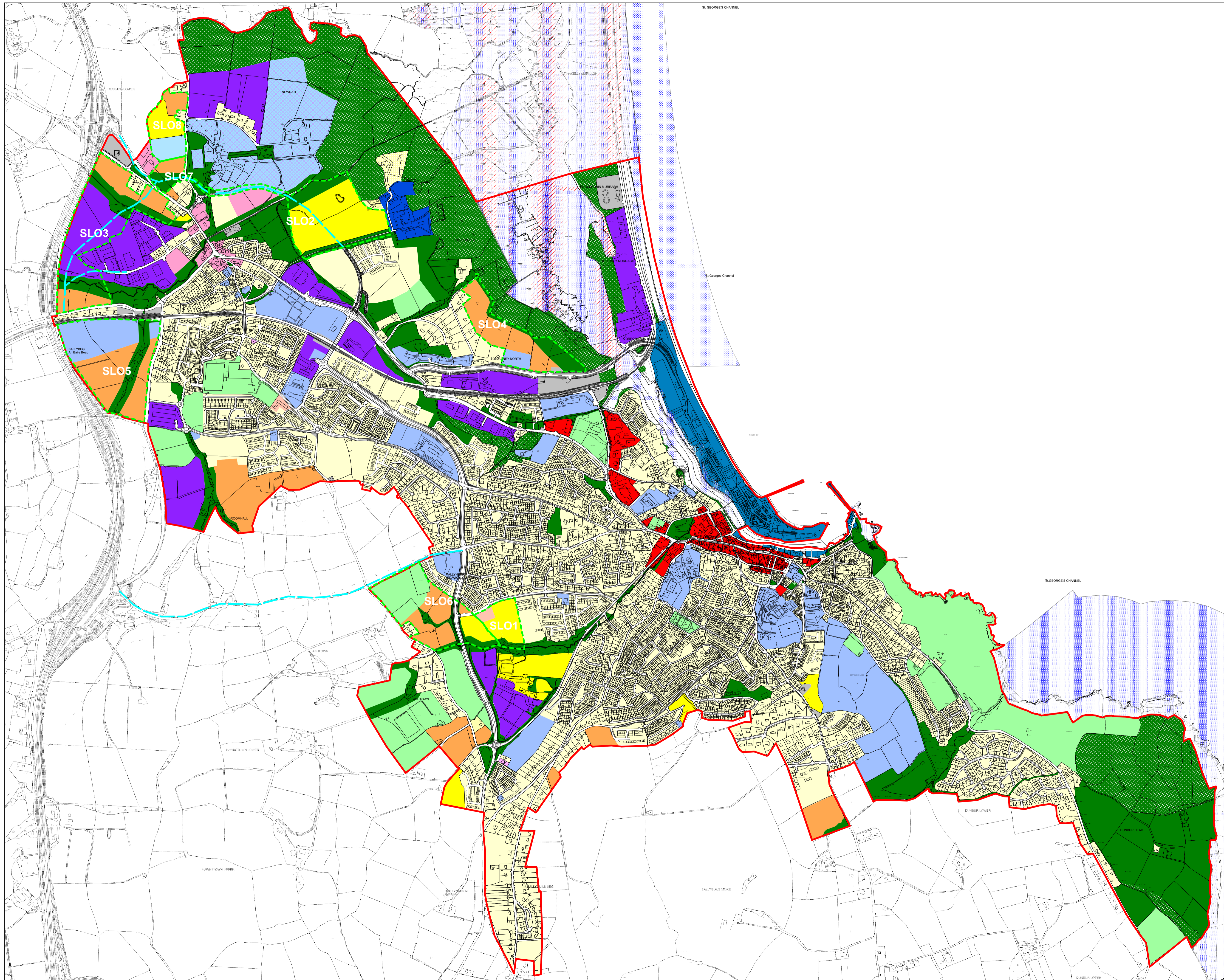
Map No. 1
Land Use Zoning
Objectives



LEGEND

- RE - Existing Residential
- RN1 - New Residential - Priority 1
- RN2 - New Residential - Priority 2
- TC - Town Centre
- VC - Village Centre
- NC - Neighbourhood Centre
- LSS - Local Shops & Services
- WCC - Wicklow County Campus
- WZ - Waterfront
- E - Employment
- CE - Community & Education
- AOS - Active Open Space
- OS1 - Open Space
- OS2 - Natural Areas
- PU - Public Utility
- T - Tourism

- SAC - Special Area of Conservation
- SPA - Special Protection Area
- NHA - Natural Heritage Area
- SLO - Specific Local Objective
- Road Objectives
- Settlement Boundary



WICKLOW COUNTY
DEVELOPMENT PLAN
2022-2028



Wicklow County Council
Planning Department

© Ordnance Survey Ireland. All rights reserved
Licence number 2024/35CCMA/Wicklow
County Council

Scale NTS